

Instructions for use
Mode d'emploi
Gebrauchsanweisung
Istruzioni per l'uso
Instrucciones de uso
Instruções da utilização
Bruksanvisningen
Brugervejledning

Axis[®] Homocysteine EIA

REF FHCY100



Axis-Shield Diagnostics Ltd.
The Technology Park
Dundee DD2 1XA
United Kingdom
Tel: +44 (0) 1382 422000
Fax: +44 (0) 1382 422088



AXIS-SHIELD

REF

Product code / Numéro de produit / Artikelnummer / Codice Prodotto / Número de lista / Número de lista / Artikelnumret / Produktnummer

IVD

For *in vitro* diagnostic use / Pour usage diagnostique *in vitro* / Nur zur *In-vitro*-Diagnose verwenden / Per uso diagnostico *in vitro* / Para diagnóstico *in vitro* / Para diagnóstico *in vitro* / För *in vitro*-diagnostisk användning / Til *in vitro*-diagnostisk brug

LOT

Lot number / Numéro de lot / Chargennummer / Numero lotto / Número de lote / Número do lote / Lotnummer / Partinummer



Consult instructions for use / Consulter le mode d'emploi / Gebrauchsanweisung beachten / Leggere le istruzioni per l'uso / Consulte las instrucciones de uso / Consultar instruções de utilização / Se bruksanvisningen / Se brukervejledning



Expiration date / Date de péremption / Verfallsdatum / Data di scadenza / Fecha de caducidad / Data de validade / Utgångsdatum / Udløpsdato



Store at 2-8 °C / Stocker entre 2 et 8 °C / Lagerung bei 2-8 °C / Conservare a 2-8 °C / Mantêngase de 2-8 °C / Conservar entre 2-8 °C / Förvaras vid 2-8 °C / Opbevares ved 2-8 °C



CAUTION! Handle human sourced materials as potentially infectious. Consult instructions for use (Infection Risk) / ATTENTION! Manipuler les produits d'origine humaine comme des produits potentiellement infectieux. Consulter le mode d'emploi (risque d'infection) / ACHTUNG! Aus Humanmaterial gewonnene Stoffe immer als potenziell infektiös behandeln. Gebrauchsanweisung beachten (Infektionsgefahr) / ATTENZIONE! Maneggiare i materiali di origine umana come potenzialmente infetti. Leggere le istruzioni per l'uso (Rischio di infezione) / PRECAUCIÓN: Maneje los materiales de origen humano como potencialmente infecciosos. Consulte las instrucciones de uso (riesgo de infección) / CUIDADO! Trate os materiais de origem humana como potencialmente infecciosos. Consulte as instruções de utilização (Risco de Infecção) / WARNING! Hantera material med mänskligt ursprung som eventuell smittofara. Se bruksanvisningen (Infektionsrisk) / FORSIGTIG! Materiale fra humane kilder skal håndteres som potentielle smittekilder. Se brugervejledningen (infektionsrisiko)

CONTROL KIT

Control Kit / Kit de contrôles / Kontroll Kit / Kit di controlli / Kit de control / Kit de controlo / Kontrollkit / Kontrol kit

CALIBRATOR KIT

Calibrator Kit / Kit d'étalons / Kalibrator Kit / Kit de calibratori / Kit de calibrador / Kit de calibração / Kalibratorkit / Kalibrator kit



96 tests / 96 testes / 96 Tests / 96 test / 96 ensayos / 96 testes / 96 tester / 96 prøver

REAG A

Reagent A-S / Réactifs A à S / Reagens A-S / Reagenti A-S /
Reactivo A-S / Reagente A-S / Reagens A-S / Reagens A-S

BUF WASH

Wash Buffer / Tampon de lavage / Waschpuffer / Tampone di
lavaggio / Tampón de Lavado / Solução tamponada de lavagem
/ Tvättbuffert / Vaskebuffer

CAL 1

Calibrator 1-6 / Etalons 1 à 6 / Kalibrator 1-6 / Calibratori 1-6 /
Calibrador 1-6 / Calibrador 1-6 / Kalibrator 1-6 / Kalibrator 1-6

CONTROL L

Control low, medium, high (L, M, H) / Contrôle bas, moyen,
haut (L, M, H) / Kontrolle: niedrig, mittel, hoch (L, M, H) / Con-
trollo basso, medio, alto (L, M, H) / Control bajo, medio, alto
(L, M, H) / Controlo baixo, médio, alto (L, M, H) / Kontroll låg,
medel, hög (L, M, H) / Kontrol lav, medium, høj (L, M, H)

MICROTITRE STRIPS

Microtitre Strips / Barrettes de microtitrage / Mikrotiter-streifen
/ Strisce di Microtitolazione / Tiras Microtiter / Tiras de micro-
titulação / Mikrotiter-remsor / Mikrotiter-strips

Contents

Intended Use	3
Summary and Explanation of the Test	3
Assay Principle	4
Warnings and Precautions	4
Kit Components	5
Preparation and Storage of Kit Components	6
Specimen Collection and Preparation	6
Limitations	7
Procedure	7
Interpretation of Results	8
Quality Control	8
Reference Range	8
Measuring Range	9
Performance Data	9
Product Safety Information	10
References	71

Intended Use

The Axis® Homocysteine Enzyme Immunoassay (EIA) is intended for the quantitative determination of total L-homocysteine in human serum or plasma. The device can assist in the diagnosis and treatment of patients suspected of having hyperhomocysteinemia and homocystinuria.

Summary and Explanation of the Test

Homocysteine (Hcy) is a thiol-containing amino acid produced by the intracellular demethylation of methionine. Hcy is exported into plasma where it circulates mostly in its oxidized forms bound to plasma proteins.^{1, 2, 3, 4} Smaller amounts of reduced homocysteine and disulfide homocystin (Hcy-SS-Hcy) are present. Total homocysteine represents the sum of all Hcy species found in plasma and serum (free plus protein-bound).

Hcy is either metabolised to cysteine or to methionine. In the vitamin B₆ dependent transsulphuration pathway Hcy is irreversibly catabolised to cysteine. A major part of Hcy is remethylated to methionine, mainly by the folate and cobalamin- dependent enzyme methionine synthase. Hcy accumulates and is excreted into the blood when these reactions are impaired.^{2,4}

Severely elevated concentrations of Hcy are found in subjects with **homocystinuria**, a rare genetic disorder of the enzymes involved in the metabolism of Hcy. Patients with homocystinuria exhibit mental retardation, early arteriosclerosis and arterial and venous thromboembolism.^{1, 5} Hcy reducing therapy improves the prognosis for this disease.⁵

Other less severe genetic defects which lead to moderately elevated levels of Hcy are also found.^{6, 7, 8}

Epidemiological studies have investigated the relationship between Hcy levels in blood and **cardiovascular disease (CVD)**. A meta analysis of 27 epidemiological studies, including more than 4000 patients, estimated that a 5 µmol/L increase in Hcy was associated with an odds ratio for coronary artery disease (CAD) of 1.6 for men and 1.8 for women, or the same that is associated with 0.5 mmol/L (20 mg/dL) increase in cholesterol. Peripheral arterial disease also showed a strong association.⁹

Certain patient groups with anemia and/or asthenia also demonstrate increased levels of plasma- or serum Hcy.^{10, 11}

Patients with chronic renal disease experience an excess morbidity and mortality due to arteriosclerotic CVD. Elevated concentration of Hcy is a frequently observed finding in the blood of these patients. Although such patients may lack some of the vitamins involved in the metabolism of Hcy,

the increased levels of Hcy are mainly due to impaired removal of Hcy from the blood by the kidney.^{12, 13}

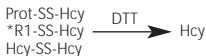
Drugs such as methotrexate, carbamazepine, phenytoin, nitrous oxide and penicillamine interfere with the Hcy metabolism and may give elevated levels of Hcy.^{14, 15}

Assay Principle

Axis® Homocysteine Enzyme Immunoassay (EIA) is an enzyme immunoassay for the determination of Hcy in blood.¹⁶ Protein-bound Hcy is reduced to free Hcy and enzymatically converted to S-adenosyl-L-homocysteine (SAH) in a separate procedure prior to the immunoassay.¹⁷ The enzyme is specific for the L-form of homocysteine, which is the only form present in the blood.

Reduction

Hcy, mixed disulfide and protein-bound forms of Hcy in the sample are reduced to free Hcy by use of dithiothreitol (DTT).



*R1 is any thiol-residue.

Enzymatic conversion

Hcy in the test sample is converted to S-adenosyl-L-homocysteine by the use of SAH hydrolase and excess adenosine (Ad).



The following solid-phase enzyme immunoassay is based on competition between SAH in the sample and immobilised SAH bound to the walls of the microtitre plate for binding sites on a monoclonal anti-SAH antibody. After removal of unbound anti-SAH antibody, a secondary rabbit anti-mouse antibody labelled with the enzyme horse radish peroxidase (HRP) is added. The peroxidase activity is measured spectrophotometrically after addition of substrate, and the absorbance is inversely related to the concentration of Hcy in the sample.

Warnings and Precautions

1. **IVD** For *In vitro* Diagnostic Use Only.
2. Reagent D contains 0.15% merthiolate ($\leq 0.074\%$ mercury), and is classified as "Harmful". Please handle and dispose of properly (See section "Product Safety Information").
3. 0.01% merthiolate is used as preservative in some reagents. Each kit contains less than 0.028% mercury. Please handle and dispose of appropriately.
4. Reagent F contains mouse antibodies and Reagent G contains rabbit antibodies.
5. Reagent S contains 0.8M sulphuric acid, and is classified as "Irritant". Please handle and dispose of properly (See section "Product Safety Information").
6. Calibrators, Controls, Reagent A and Reagent E contain less than 0.10% sodium azide as preservative. Sodium azide may react with lead and copper plumbing to form highly explosive metal azides. On disposal, flush with a large volume of water to prevent azide build-up.
7. **⚠** Controls contain sera originating from human blood samples. The source materials have been tested and found to be negative for Hepatitis B Surface Antigen (HBsAg), HIV-1 Antigen (HIVAg), HCV antibody, HIV-1/2 antibody, HTLV-1/2 antibody and Hepatitis B core Antibody (HBc). However, blood derivatives should be handled according to recommended procedures for handling infectious material. HHS publication no. (CDC) 93-8395¹⁸ or local/national guidelines on laboratory safety procedures should be consulted.

8. Reagents with different lot numbers must not be interchanged.
9. Do not use the kit after the expiration date on the outer box.

Kit Components

[REF] FHCY100 Axis® Homocysteine EIA Kit, 96 wells ([REF] FHCY100A for Indian customers)

Kit Components	Solution	Color Code	Component Description	Volume
[REAG] A	Assay buffer	Brown	Phosphate buffer, sodium azide	54 mL
[REAG] B	Adenosine/DTT	White	Adenosine / dithiothreitol, citric acid	3.5 mL
[REAG] C	SAH-hydrolase	White	Bovine S-adenosyl-L-homocysteine hydrolase, trisbuffer, glycerol, methylparaben	3.5 mL
[REAG] D	Enzyme inhibitor	Orange	Merthiolate, phosphate buffer	55 mL
[REAG] E	Adenosine deaminase	Red	Adenosine deaminase, phosphate buffer, sodium azide, BSA, phenol-red dye	55 mL
[REAG] F	a-SAH antibody	Green	Monoclonal mouse-anti-S-adenosyl-L-homocysteine antibody, BSA, merthiolate	25 mL
[REAG] G	Enzyme conjugate	Blue	Rabbit anti-mouse-antibody enzyme conjugate, BSA, horse radish peroxidase, blue dye	15 mL
[REAG] H	Substrate solution	Violet	N-methyl-2-pyrrolidone, propyleneglycol	15 mL
[REAG] S	Stop solution	Yellow	0.8 M Sulphuric acid	20 mL
[BUF] WASH	Wash buffer	Black	Phosphate buffer, merthiolate, Tween 20, BSA	60 mL
[CAL] 1 - [CAL] 6	Calibrators	White	S-adenosyl-L-homocysteine (2, 4, 8, 15, 30, 50 µmol/L) in buffer with preservative	6 x 1.5 mL
[MICROTITRE STRIPS]	Microtitre strips	-	Coated with S-adenosyl-L-homocysteine	12x8 wells

[BUF] WASH is concentrated and must be diluted (1+9) with purified water before use. All other components are ready to use.

[REF] FHCY200 Axis® Homocysteine EIA Control Kit ([REF] FHCY200A for Indian customers)

Kit Components	Cap Code	Component Description	Volume
[CONTROL] L	L	7.0 µmol/L homocysteine in diluted serum samples of human origin, phosphate buffer and preservative	1.5 mL
[CONTROL] M	M	12.5 µmol/L homocysteine in diluted serum samples of human origin, phosphate buffer and preservative	1.5 mL
[CONTROL] H	H	25.0 µmol/L homocysteine in diluted serum samples of human origin, phosphate buffer and preservative	1.5 mL

All controls are ready to use.

[REF] FHCY050 Axis® Homocysteine EIA Wash buffer (**[REF]** FHCY050A for Indian customers)

Kit Components	Component Description	Volume
[BUF] [WASH]	Phosphate buffer, merthiolate, Tween 20, BSA	1000 mL

[BUF] **[WASH]** is concentrated and must be diluted (1+9) with purified water before use.

Materials required but not provided in the kit:

- Homocysteine controls (see section "Quality Controls" for more information)
- Plastic or glass tubes for pre-treatment of samples
- Pipettes / multipipettes 25 µL, 100 µL, 200 µL and 500 µL or 8 channel multipipette for 100 µL and 200 µL
- Volumetric flask 50 mL and 600 mL
- Incubator, 37 °C
- Washer and reader (450 nm) for microtitre plates

Preparation and Storage of Kit Components

1. Components should be stored refrigerated (2 - 8 °C). Store all bottles upright and tightly capped. The components are stable until the stated expiration date when stored and handled as directed. Once the components in the Axis® Homocysteine Enzyme Immunoassay (EIA) Kit are opened they are stable for 12 weeks when stored at 2-8 °C.
2. The sample pre-treatment solution has to be made by mixing Reagent A, B and C (see Section "Procedure"). The solution is stable for one hour and has to be freshly made for each run.
3. The Wash buffer must be diluted (1+9) with distilled water before use. The prepared Wash buffer is stable for 4 weeks when stored at room temperature (18-25 °C).
4. Reagent D and H are stored in dark bottles to avoid exposure to light.
5. It is important that the microtitre strips are kept dry, i.e. in the sealed bag with drying capsules, and stored refrigerated. Equilibration for a minimum of two hours is required to reach room temperature (18 - 25 °C). Leave the strips in the bag during equilibration.
6. Only the necessary number of microtitre strips should be kept in the frame during the run. Unused strips should be kept in the sealed bag with drying capsules.
7. Avoid exposure of the kit to temperatures exceeding 37 °C as this may denature the enzymes.

Specimen Collection and Preparation

EDTA-plasma or serum may be used with the Axis® Homocysteine Enzyme Immunoassay (EIA) assay.

As synthesis of Hcy continues in red blood cells after drawing, it is very important to prepare specimens as follows:

- Serum samples should be allowed to clot for no more than 30 minutes before centrifugation and separation of serum. Serum samples should be kept on ice prior to separation.
- EDTA-plasma samples must be centrifuged or put on ice immediately after drawing. EDTA-plasma samples may be kept on ice for up to 6 hours prior to separation by centrifugation.

Food consumption can affect circulating homocysteine levels. Protein rich meals give higher homocysteine values and should be avoided late in the day before sampling.^{19, 20} Standardised sampling procedures are crucial due to the above mentioned influencing factors. Complete mixing of thawed samples is required before use.

Plasma or serum samples may be stored for 12 weeks at 2 - 8 °C, for up to 3 weeks at room temperature (18 - 25 °C) and have been shown to be stable for at least 8 months if frozen at minus 20 °C.

Limitations

- If an automatic pipetting station is used, thorough washing of the tubing after addition of the blue coloured Reagent G may be needed - preferably with diluted acid followed by water. Any remaining solution in the tubing will interfere with the next assay step; i.e. addition of Reagent H.
- The washing procedure is critical for obtaining good precision. If manual washing is required, use 4 times 350 μL instead of 3 times 400 μL . After washing, empty the wells on paper towels.
- Avoid exposure of the kit to temperatures exceeding 37 °C as this may denature the enzymes.
- Specimens from patients who are on drug therapy involving S-adenosyl-methionine may show falsely elevated levels of homocysteine.
- Specimens from patients who have received preparations of mouse monoclonal antibodies for diagnosis or therapy may contain human anti-mouse antibody (HAMA). HAMA, present in serum or plasma specimens, may interfere in immunoassays which utilise mouse monoclonal antibodies. These specimens should not be assayed with the Axis® Homocysteine Enzyme Immunoassay (EIA) assay.
- Specimens from patients taking methotrexate, carbamazepine, phenytoin, nitrous oxide, anti-convulsants or 6-azauridine triacetate, may have elevated levels of homocysteine due to metabolic interference with the homocysteine metabolism.

Procedure

Make sure all solutions and microtitre strips are equilibrated to room temperature before use. Leaving the kit at room temperature over night is recommended. We recommend running the calibrators in duplicate and to performing a new calibration curve for each run to avoid run-to-run variations using coated microtitre plates.

Sample pre-treatment procedure

1. Sample pre-treatment solution must be made up no more than 1 hour prior to the start of the assay. Volume needed per 10 samples (no dead volume calculated):

4.5 mL **REAGIA**

0.25 mL **REAGB**

0.25 mL **REAGC**

Mix.

2. Dilute calibrators and samples/controls in plastic or glass tubes as follows:
25 μL calibrator/sample/control
+ 500 μL sample pre-treatment solution
Mix well.
Incubate for 30 minutes at 37 °C (Cap the tubes or cover with parafilm during incubation).

Note: Proceed with step 3 before the samples have cooled.

3. Add 500 μL **REAGD**
Mix well.
Incubate for 15 minutes at 18-25 °C.
4. Add 500 μL **REAGE**
Mix well.
Incubate for 5 minutes at 18-25 °C.

Microtitre plate procedure

5. Pipette 25 μL diluted calibrator / sample / control from step 4 into the wells of the SAH-coated microtitre strips.

6. Add 200 μL **REAGIF** to each well.
Incubate for 30 min at 18-25 °C.
Use the enclosed lid during all incubations.
7. Wash with diluted Wash buffer (**BUFWASH** + purified water).
Use 3 x 400 μL . If manual washing is required, use 4 times 350 μL instead of 3 times 400 μL .
After washing, empty the wells on paper towels.
8. Add 100 μL **REAGIG** to each well.
Incubate for 20 min at 18-25 °C.
9. Wash with diluted Wash buffer (**BUFWASH** + purified water).
Use 3 x 400 μL . If manual washing is required, use 4 times 350 μL instead of 3 times 400 μL .
After washing, empty the wells on paper towels.
10. Add 100 μL **REAGIH** to each well.
Incubate for 10 min at 18-25 °C.
11. Add 100 μL **REAGIS** to each well.
12. Shake and read at 450 nm within 15 minutes (Automatic plate shaker is preferred to ensure proper mixing).

Interpretation of Results

Results should be interpreted considering all other test results and the clinical status of the patient. We recommend that a four parameter logistic curve fit is used for preparing the calibration curve and calculation of unknown samples.

Quality Controls

We recommend that each laboratory use a homocysteine control with known value. Axis-Shield provides a set of low, medium and high controls, **REF** FHCY200 (**REF** FHCY200A for Indian customers). The controls contain L-homocysteine in processed human serum at the following concentrations:

Control	Mean value Hcy ($\mu\text{mol/L}$)	Range Hcy ($\mu\text{mol/L}$)
CONTROL L	7.0	5.6 - 8.4
CONTROL M	12.5	10.0 – 15.0
CONTROL H	25.0	20.0 – 30.0

Reference Range

The reference range should be determined by each laboratory to confirm the characteristics of the population being tested. As a point of reference, the following data may be used until the laboratory has analysed a sufficient number of samples to determine its own reference range. The Hcy concentration in plasma or serum of healthy individuals varies with age, gender, geographical area and genetic factors. Scientific literature reports reference values for adult male and females between 5 and 15 $\mu\text{mol/L}$, men having higher values than women, and post menopausal women having higher homocysteine values than pre menopausal women.^{21, 22, 23} Hcy values will normally increase with age, giving a reference range among an elderly population (> 60 years) of 5 - 20 $\mu\text{mol/L}$.²⁴ In countries with folic acid fortification programmes, reduced levels of Hcy may be observed.^{25, 26}

Samples from 382 males and females (100 Scandinavians; 54 males aged 30 - 60, 46 females aged 29 - 70. 185 Hispanics; predominantly males aged 20 - 65. 97 Americans; 54 males aged 16 - 74, 43 females aged 15 - 79), apparently healthy, without information on current medications, disease states or known risk conditions for elevated homocysteine, were tested using the Axis® Homocysteine Enzyme Immunoassay (EIA). The median value of the homocysteine concentration among Scandinavians was 8.4 µmol/L, among Hispanics 8.9 µmol/L and among Americans 9.3 µmol/L.

The homocysteine reference range was established based on 95% confidence limits as 5 - 15 µmol/L for the Scandinavian population, 3.6 - 15.0 µmol/L for the American population and 2.9 - 16.0 µmol/L for the Hispanic population.

Measuring Range

The calibrator range is from 2 to 50 µmol/L.

Performance Data

Assay Precision

Precision of the Axis® Homocysteine EIA assay was evaluated according to NCCLS Protocol EP5-T2. Three levels of controls were assayed for 20 days with 4 replicates per run at each level. Precision data are summarised in Table 1.

Table 1: Precision

Samples	Average Hcy µmol/L	Within run precision	Total precision
Control Low	6.1	8 %	10 %
Control Medium	10.5	7 %	9 %
Control High	20.6	8 %	10 %

Limit of quantification

The quantification limit (CV < 20%) is 1.0 µmol/L.

Linearity of diluted plasma samples

If the homocysteine concentration of a sample exceeds the range of the calibration curve, the sample should be diluted with Reagent A and reanalysed.

The linearity was evaluated by diluting four high patient samples with varying amounts of Reagent A as diluent.

Linear regression analysis gave:

Slope: 0.98

Intercept: -0.4 µmol/L

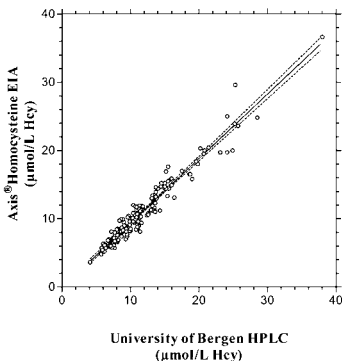
Correlation coefficient r^2 : 0.99

Method Comparison

The Axis® Homocysteine Enzyme Immunoassay (EIA) was compared to the University of Bergen HPLC method.²⁷

A comparison of 164 patient samples ranging from 3 - 37 µmol/L homocysteine gave the linear regression shown in Figure 1.

Axis® Homocysteine EIA vs
University of Bergen HPLC



Slope: 0.94

Intercept: - 0.09 µmol/L

Correlation coefficient (r^2): 0.94

Figure 1: Method Comparison

Interfering Substances

Bilirubin, haemoglobin, lipids, red blood cells, protein and sodium fluoride were spiked into plasma samples and tested for interference by Axis® Homocysteine Enzyme Immunoassay (EIA).

The assay demonstrated less than 10% interference in the presence of:

bilirubin (0.5 g/L), haemoglobin (10 g/L), triglycerides (10 g/L), red blood cells (5.0% v/v), protein (80 g/L) and sodium-fluoride (10 g/L).

Cross-reactivity

Cross-reactivity was tested for compounds that may interfere with the Axis® Homocysteine Enzyme Immunoassay (EIA) assay. The assay demonstrated 16% cross-reactivity in the presence of S-adenosyl-L-methionine (0.5 mmol/L) and less than 1% cross-reactivity in the presence of: Adenosine (5.0 mmol/L), cystathionine (0.5 mmol/L), L-cysteine (100 mmol/L), glutathione (100 mmol/L) and thio-lactone (0.5 mmol/L).

Product Safety Information

REAGD



R-20/21/22 Harmful by inhalation, in contact with skin and if swallowed.

R-33 Danger of cumulative effects.

S-24 Avoid contact with skin.

S-28 After contact with skin, wash immediately with plenty of water.

S-36/37/39 Wear suitable protective clothing, gloves and eye/face protection.

REAGS

R-36/38 Irritating to eyes and skin.

S-25 Avoid contact with eyes.

S-26 In case of contact with eyes, rinse immediately with plenty of water and seek medical advice.

S-37/39 Wear suitable gloves and eye/face protection.

References

1. Malinow, MR. Plasma homocyst(e)line and arterial occlusive diseases: A mini-review. *Clin Chem* 1995;41:173-176.
2. Ueland PM. Homocysteine species as components of plasma redox thiol status. *Clin Chem* 1995;41:340-342.
3. Perry IJ, Refsum H, Morris RW, Ebrahim SB, Ueland PM, Shaper AG. Prospective study of serum total homocysteine concentration and risk of stroke in middle-aged British men. *The Lancet* 1995;346:1395-1398.
4. Finkelstein JD. Methionine metabolism in mammals. *J Nutr Biochem* 1990;1:228-237.
5. Mudd SH, Levy HL, Skovby F. Disorder of transsulfuration. In: C.R. Scriver, A.L. Beaudet, W.S. Sly, et al. eds. *The metabolic basis of inherited disease* New York: McGraw-Hill; 1995:1297-1327.
6. Clarke R, Daly L, Robinson K, Naughten E, Cahalane S, Fowler B, Graham I. Hyperhomocysteinemia: An independent risk factor for vascular disease. *N Engl J Med* 1991;324:1149-1155.
7. Deloughery TG, Evans A, Sadeghi A, McWilliams J, Henner WD, Taylor LM Jr, Press RD. Common mutation in methylenetetrahydrofolate reductase. Correlation with homocysteine metabolism and late-onset vascular disease. *Circulation* 1996;94:3074-3078.
8. Schmitz C, Lindpaintner K, Verhoef P, Gaziano JM, Buring J. Genetic polymorphism of methylenetetrahydrofolate reductase and myocardial infarction. *Circulation* 1996;94:1812-1814.
9. Boushey CJ, Beresford SAA, Omenn GS, Motulsky AG. A Quantitative Assessment of Plasma Homocysteine as a Risk Factor for Vascular Disease, *JAMA* 1995;274:1049-1057.
10. Allen, RH, Stabler SP, Savage DG, Lindenbaum J. Diagnosis of cobalamin deficiency I: Usefulness of serum methylmalonic acid and total homocysteine concentrations, *Am J Hematol* 1990;34:90-98
11. Stabler, SP, Lindenbaum J, Allen RH. The Use of homocysteine and other metabolites in the specific diagnosis of vitamin B-12 deficiency, *J Nutr* 1996;126: 1266S-1272S.
12. Guttormsen AB, Svarstad E, Ueland PM, Refsum H. Elimination of homocysteine from plasma in subjects with end-stage renal failure. *Irish J Med Sci* 1995;164 (Suppl. 15):8-9
13. Bostom AG, Lathrop L. Hyperhomocysteinemia in end-stage renal disease: Prevalence, etiology, and potential relationship to arteriosclerotic outcomes. *Kidney Int* 1997;52:10-20.
14. Desouza C, Keebler M, McNamara DB, Fonseca V. Drugs affecting homocysteine metabolism. *Review. Drugs* 2002;62 (4):605-616.
15. Refsum H, Ueland PM. Clinical significance of pharmacological modulation of homocysteine metabolism. *Review. Trends Pharmacol Sci* 1990;11:411-416
16. Frantzen F, Faaren AL, Alfheim I, Nordhei AK. An enzyme conversion immunoassay for determining total homocysteine in plasma or serum. *Clin Chem* 1998;44:311-316.
17. Sundrehagen E. Axis Biochemicals ASA. Enzymatic assay for homocysteine and a kit therefor. EP 623174/US5631127.
18. US Department of Health and Human Services. Biosafety in Microbiological and Biomedical Laboratories. HHS Publication No. (CDC) 93-8395. Washington, DC: US Government Printing Office, May 1999 (4th edition).
19. Ubbink JB, Vermaak Hayward WJ, van der Merwe A, Becker PJ. The effect of blood sample aging and food consumption on plasma total homocysteine levels. *Clinica Chimica Acta* 1992;207:119-128.
20. Guttormsen AB, Schneede J, Fiskerstrand T, Ueland PM, Refsum H. Plasma concentrations of homocysteine and other aminothioli compounds are related to food intake in healthy human subjects. *J Nutr* 1994;124:1934-1941.
21. Ueland PM, Refsum H, Stabler SP, Malinow R, Andersson A, Allen RH. Total homocysteine in plasma or serum: Methods and clinical applications. *Clin Chem* 1993;39:1764-1779.
22. Nehler MR, Taylor LM Jr, Porter JM. Homocysteine as a risk factor for atherosclerosis: A review. *Cardiovasc Pathol* 1997;6:1-9.

23. Lussier-Cacan S, Xhignesse M, Pliot A, Selhub J, Davignon J, Genest J Jr. Plasma total homocysteine in healthy subjects: sex-specific relation with biological traits. *Am J Clin Nutr* 1996; 64:587-593.
24. Clarke R, Woodhouse P, Ulvik A, Frost C, Sherliker P, Refsum H, Ueland PM, Khaw K- T. Variability and determinants of total homocysteine concentrations in plasma in an elderly population. *Clin Chem* 1998;44:102-107.
25. Jacques PF, Selhub J, Bostom AG, Wilson PWF, Rosenberg IH. The effect of folic acid fortification on plasma folate and total homocysteine concentrations. *N Engl J Med* 1999;340:1449-1454.
26. Lawrence JM, Pettit DB, Watkins M, Umekubo MA. Trends in serum folate after food fortification. *Lancet* 1999;354:915-916.
27. Fiskerstrand T, Refsum H, Kvalheim G, Ueland PM, Homocysteine and other thiols in plasma and urine: Automated determination and sample stability. *Clin Chem* 1993;39:263-271.