



Smoking is a risk factor for anti-CCP antibodies only in RA patients that carry HLA-DRB1 Shared Epitope alleles

Suzanne P. Linn-Rasker, Annette H.M. van der Helm - van Mil, Floris A. Van Gaalen, Margreet Kloppenburg, Rene de Vries, Saskia le Cessie, Ferdinand C. Breedveld, Rene E.M. Toes and Tom W.J. Huizinga

Ann. Rheum. Dis published online 13 Jul 2005;
doi:10.1136/ard.2005.041079

Updated information and services can be found at:
<http://ard.bmjournals.com/cgi/content/abstract/ard.2005.041079v1>

These include:

Rapid responses

You can respond to this article at:
<http://ard.bmjournals.com/cgi/eletter-submit/ard.2005.041079v1>

Email alerting service

Receive free email alerts when new articles cite this article - sign up in the box at the top right corner of the article

Notes

Online First contains unedited articles in manuscript form that have been peer reviewed and accepted for publication but have not yet appeared in the paper journal (edited, typeset versions may be posted when available prior to final publication). Online First articles are citable and establish publication priority; they are indexed by PubMed from initial publication. Citations to Online First articles must include the digital object identifier (DOIs) and date of initial publication.

To order reprints of this article go to:
<http://www.bmjournals.com/cgi/reprintform>

To subscribe to *Annals of the Rheumatic Diseases* go to:
<http://www.bmjournals.com/subscriptions/>

Extended report

**Smoking is a risk factor for anti-CCP antibodies only in RA patients
that carry HLA-DRB1 Shared Epitope alleles.**

S.P. Linn-Rasker¹, A.H.M. van der Helm-van Mil¹, F.A. van Gaalen¹,
M. Kloppenburg^{1,2}, R.R.P. de Vries³, S. le Cessie⁴, F.C. Breedveld¹, R.E.M. Toes¹,
T.W.J. Huizinga¹

¹Department of Rheumatology, Leiden University Medical Center, Leiden, The Netherlands, ² Department of Epidemiology, Leiden University Medical Center, Leiden, The Netherlands; ³Department of Immunohaematology and Blood bank, Leiden University Medical Center, Leiden, The Netherlands; ⁴Department of Medical Statistics, Leiden University Medical Center, Leiden, The Netherlands;

Corresponding author:

A.H.H. van der Helm-van Mil

Department of Rheumatology, Leiden University Medical Center

P.O.Box 9600, 2300 RC Leiden, The Netherlands

Tel ++ 31 71 5263598, Fax ++ 31 71 5266752; Email AvdHelm@lumc.nl

ABSTRACT

Objectives To study the gene-environment interaction of tobacco-exposure (TE) and shared-epitope (SE) on autoantibodies in Rheumatoid Arthritis (RA) and Undifferentiated Arthritis (UA).

Methods From incident cases of arthritis (n=1305), patients that did not fulfil any classification criteria at the two weeks visit, UA (n=486), as well as patients that fulfilled the ACR criteria for RA (n=407) were identified. IgM Rheumatoid Factor (RF), anti-cyclic-citrullinated peptide (CCP) antibodies and HLA-DRB1 alleles were determined.

Results In RA an interaction was found between TE and SE for the presence of anti-CCP antibodies, as the odds ratio (OR) for anti-CCP antibodies of patients having both TE and SE was higher than the summed OR's of patients having only TE or SE (OR TE+SE- 1.07, TE-SE+ 2.49, and TE+SE+ 5.27, all relative to TE-SE-). A similar effect was found for RF, but stratification revealed that the interaction primarily associates with the anti-CCP antibody response. In patients with UA at two weeks or with persistent UA after one year no interaction between TE and SE was observed for the presence of autoantibodies.

Conclusions TE increases the risk factor for anti-CCP antibodies only in SE-positive RA-patients. The gene-environment interaction between smoking and SE leading to autoantibodies is specific for RA and is not observed in UA.

Keywords rheumatoid arthritis, anti-CCP antibodies, rheumatoid factor, smoking, shared epitope.

The corresponding author has the right to grant on behalf of all authors and does grant on behalf of all authors, an exclusive license on a worldwide basis to the BMJ Publishing Group Ltd and its Licensees to permit this article (if accepted) to be published in Annals of the Rheumatic Diseases editions and any other BMJPG products to exploit all subsidiary rights, as set out in our license (<http://ard.bmjournals.com/misc/ifora/licenceform.shtml>).

In the search for the aetiology of Rheumatoid arthritis (RA) genetic predisposition, environmental- and dietary risk factors may present clues for pathogenesis (1-7). The most important genetic risk factor for the development of RA is the presence of HLA Class II alleles that share the conserved amino acid sequence called the Shared Epitope (SE) (8). These SE-residues constitute a part of the antigen presenting binding site. The Shared Epitope hypothesis postulates that the shared epitope motif itself is directly involved in the pathogenesis of RA by allowing the presentation of a peptide to arthritogenic T-cells. The most prominent environmental risk factor for RA is smoking; smokers have increased levels of Rheumatoid Factor (RF) (9-11), are more prone to develop RA (11-14) and develop more severe disease (15-17). Interaction between environmental and genetic risk factors points to the existence of disease-specific pathogenic pathways involved in disease induction or progression.

For RA Padyukov et al recently described a gene-environment-interaction between smoking and SE that provides risk (OR 2.8; 95% CI 1.6-4.8) for RF-positive but not RF-negative RA in a large cohort of 858 RF-positive and 1048 RF-negative patients with RA (18). Recently, we identified in two large cohorts from both the USA and from Europe by different genetic-epidemiological methods (association and linkage) that HLA-DRB1 alleles are only a risk factor for RA patients that have anti-CCP antibodies and not in the absence of anti-CCP antibodies, suggesting different pathogenic pathways for anti-CCP positive and negative RA (19).

This study investigates whether the gene-environment interaction smoking-shared epitope is also present for the anti-CCP antibody response and whether this interaction was more pronounced for development of RF compared to development of the anti-CCP antibodies. Secondly, this study aimed to assess whether the interaction smoking and SE is specific for patients with RA or is also present in undifferentiated arthritis (UA). To this end patients with arthritis that did not fulfil any classification criteria at presentation and patients with persistent UA at one year follow-up were used. These patients have a spontaneous remission rate of about 50% (20) and might have differences in the underlying pathogenesis. If the interaction between smoking and SE that leads to autoantibody formation is specific for the pathogenesis of RA, it is hypothesized that such an interaction will not be seen in patients with an undifferentiated arthritis of which clinical follow-up has learned that these patients have not developed RA.

PATIENTS AND METHODS

Patients

For this study, the Leiden Early Arthritis Clinic (EAC), a population-based inception cohort of patients with newly diagnosed early arthritis was used (for further reading see (21)). RA was diagnosed according to the American College of Rheumatology (ACR) criteria of 1987(22). Patients who could not be properly classified according to one of the ACR-criteria at 2 weeks follow-up were categorized as having UA (20). This population of UA patients was further divided in patients that (1) had developed RA, (2) remained unclassified (persistent UA) or (3) had developed other rheumatic diseases such as spondylarthropathies, osteoarthritis, gout, reactive arthritis at one year follow-up (Figure 1).

At inclusion in the EAC-cohort, for each patient the smoking status (cigarettes, cigars) was registered as past, current or never smokers. Current and past smokers were classified as tobacco exposure positive (TE+) and never smokers as tobacco exposure negative (TE-)(11). Baseline laboratory parameters included C-reactive protein (CRP), IgM rheumatoid factor (ELISA as previously described 23), anti-CCP antibodies (ELISA, Immunoscan RA Mark 2, Euro-Diagnostica, Arnhem, The Netherlands and Axis-Shield, Dundee, UK) and HLA-Class II alleles. The HLA-DRB1 (sub-)typing was performed by polymerase chain reaction using specific primers and hybridisation with sequence-specific oligonucleotides. Shared epitope alleles were: DRB1 *0101, *0102, *0401, *0404, *0405, *0408, *0410 and *1001 (24). Patients homozygous and heterozygous for shared epitope were both classified as SE positive. Missing data for the whole cohort of 1305 patients ranged for several items SE, TE, anti-CCP and RF between 0%-20%. An analysis of the baseline values of patients with missing data-points revealed no differences to those patients without.

Statistical analysis

Odds ratios were calculated for the primary outcome measures RF and anti-CCP antibodies. Stratified analysis was performed for both anti-CCP-positive and anti-CCP negative as well as RF-positive and RF-negative strata. Chi-square analysis was performed on 2 by 4 tables..

RESULTS

Patient characteristics

Between 1993 and 2003, 1305 patients were included in the EAC-cohort. At two weeks follow-up, 486 patients did not fulfil any classification criteria and were thus classified as UA. At this time 276 patients fulfilled the ACR criteria for RA. Of the 486 UA patients, after one year follow-up 131 patients were diagnosed as having RA. In 203 patients the diagnosis remained UA (persistent UA) and in the other 152 patients another rheumatic disorder such as spondylarthropathy, osteoarthritis, psoriatic arthritis, etc was identified (Figure 1). The total number of patients from the cohort that was identified as having RA at one year was 407. From the patients classified as persistent UA at one year, 15% developed RA during further follow-up (K. Verpoort, unpublished data).

Baseline patient characteristics of patients that at two weeks presented with RA or UA are given in Table 1; the data on the UA patients is presented for both the UA patients that developed RA as the UA patient that had persistent UA after one year follow-up. UA patients that did not develop RA were younger at presentation than the patients that developed RA (mean 48 years, vs 56 years, $p < 0.001$). The UA patients that developed RA after one year had at baseline higher levels of CRP, RF and anti-CCP antibodies and were more often SE-positive compared to the UA-patients that had persistent UA or developed other rheumatological diagnosis (Table 1). No differences were observed between the 131 RA patients that developed RA after 1 year and the 276 patients with RA that were diagnosed at the two weeks visit.

Table 1 Patient characteristics at baseline of patients that presented with RA, patients that presented with UA and developed RA after 1 year and patients that presented with UA and had other diagnosis than RA after one year follow-up.

	RA at 2 weeks (n=276)	UA→RA (n=131)	UA→non RA (n=355)	p*
Age yr (mean)	58	56	48	<0.001
Female (%)	66	64	51	n.s.
CRP (mg/l, mean)	35	29	21	0.036
IgM RF + (%)	65	52	13	<0.001
Anti-CCP + (%)	54	51	7	< 0.01
Shared Epitope + (%)	68	63	49	0.046
Tobacco exposure + (%)	47	52	50	n.s.

Shared Epitope + means presence of 1 or 2 shared epitope alleles. Tobacco exposure + means current and past smokers as indicated in the medical history. *P values were determined for UA→RA versus UA→non RA. Comparison of RA at 2 weeks versus UA→RA revealed no significant differences.

Interaction tobacco exposure and shared epitope in RA

In RA and UA patients the interaction between SE and TE was analysed. Outcome parameters were RF and anti-CCP antibodies.

In all RA patients, no effect of TE on the RF status was seen in SE negative patients in contrast to a clear effect in SE positive patients. The OR for positive RF was 1.47 for TE+ SE- patients, 1.35 for TE- SE+ patients and 3.23 for TE+SE+ patients all relative to TE-SE- patients (Table 2), showing an interaction between TE and SE for the development of RF.

In SE negative RA patients, no effect of TE was seen for positive anti-CCP antibodies in contrast to a clear effect in the SE positive group. The OR for positive anti-CCP antibodies was 1.07 for TE+ SE- patients, 2.49 for TE- SE+ patients and 5.27 for TE+SE+ patients, again all relative to TE-SE- patients. As the odds ratio for anti-CCP antibodies of patients having both TE and SE was higher than the summed OR's of patients having only TE or SE, an interaction was found between TE and SE for the presence of anti-CCP antibodies. The difference between the TE- SE+ patients and the TE+ SE+ patients was significant both for IgM-RF and for anti-CCP (Table 2). Presuming that RF-positive and anti-CCP positive patients partly overlap each other, a stratified analysis was done for both RF-positive and RF-negative and anti-CCP positive and negative patients. The results, shown in Table 2, demonstrate that when stratified for the presence/absence of anti-CCP antibodies, no significant interaction is found between TE and SE in relation to the presence of RF. When stratified for RF, in the RF negative group an interaction between TE and SE was observed for the development of anti-CCP antibodies. These data suggest that the interaction between TE and SE primarily associates with positive anti-CCP antibodies and not with positive RF.

Table 2 Odds ratios for developing RF and anti-CCP antibodies in the presence of Tobacco Exposure (TE) and/or shared epitope alleles (SE) in all Rheumatoid Arthritis patients at 1 year.

	TE	SE	RF +	RF-	OR	95% CI	p
	-	-	23	31	1.00	-	-
	+	-	25	23	1.47	0.62-3.45	0.33
	-	+	54	54	1.35	0.66-2.75	0.37 *
	+	+	72	30	3.23	1.54-6.81	<0.001 * 0.002 π
	TE	SE	anti-CCP +	anti-CCP -	OR		p
	-	-	18	34	1.00	-	-
	+	-	17	30	1.07	0.43-2.65	0.87
	-	+	58	44	2.49	1.18-5.31	0.01 #
	+	+	67	24	5.27	2.37-11.80	<0.001 # <0.001 π
anti-CCP	TE	SE	RF +	RF-	OR	95% CI	p
+	-	-	14	4	1.00	-	-
+	+	-	17	0	∞	∞	0.10
+	-	+	46	12	1.10	0.22-4.42	0.88 ¶
+	+	+	54	13	1.19	0.24-4.68	0.79 ¶ 0.23
-	-	-	7	27	1.00	-	-
-	+	-	8	22	1.40	0.38-5.32	0.57
-	-	+	6	38	0.61	0.12-2.40	0.41 ¶
-	+	+	7	17	1.59	0.39-6.34	0.45 ¶ 0.39 π
RF	TE	SE	anti-CCP +	anti-CCP -	OR	95% CI	p
+	-	-	14	7	1.00	-	-
+	+	-	17	8	1.06	0.26-4.34	0.92
+	-	+	46	6	3.83	0.91-16.07	0.03 ¶
+	+	+	54	7	3.86	0.96-15.11	0.02 ¶ 0.02 π
-	-	-	4	27	1.00	-	-
-	+	-	1	22	0.31	0.01-3.47	0.28
-	-	+	12	38	2.13	0.56-9.97	0.22 ¶
-	+	+	13	17	5.16	1.28-24.71	0.01 ¶ 0.04 π

* TE-SE+ versus TE+SE+: OR 2.4 (95%CI 1.3-4.4, p=0.002)

TE-SE+ versus TE+SE+: OR 2.1 (95%CI 1.1-4.1, p=0.02)

¶ Comparison TE-SE+ versus TE+SE+ not significant

π P-value of Chi-square analysis of 2 by 4 table

Interaction tobacco exposure and shared epitope in UA

In the whole group of patients who presented with UA, the combination of TE and SE did not significantly increase the risk for the presence of positive RF or anti-CCP antibodies (Table 3). The OR for positive anti-CCP antibodies in TE- SE+ patients with UA was increased compared to TE-SE- (OR 3.83; 95% CI 1.33-12.53), but addition of TE to the presence of SE did not significantly increase the risk of having anti-CCP antibodies (OR 4.02 relative to OR of 3.83, table 3A).

Subsequently we assessed whether in the subgroup UA patients that developed RA (n=131) smoking combined with presence of SE increased the risk of having anti-CCP antibodies. Therefore the non-smoking SE negative UA patients that developed RA were compared to smoking SE negative UA patients that developed RA patients (OR 0.77), as well as to non-smoking SE-positive patients with UA that developed RA (OR 1.48) and finally to smoking, SE-positive patients with UA that developed RA (OR 2.92). In this smaller group of RA patients a trend for the interaction of SE and TE to increase the risk of having anti-CCP antibodies was observed. Calculations for outcome RF showed similar results (Table 3B).

The same calculations were repeated for patients with persistent UA (n=203).

Although the number of anti-CCP positive UA patients is low, no effect of tobacco exposure combined with SE on the risk of having anti-CCP antibodies or RF was observed (Table 3C). Thus, the interaction of SE and tobacco exposure was found for the presence of RF and for anti-CCP antibodies in patients with RA and in those UA patients that develop RA within one year but not in patients with persistent UA.

Table 3 Odds ratios for developing RF and anti-CCP antibodies in the presence of Tobacco Exposure (TE) and/or shared epitope alleles (SE) in patients with Undifferentiated Arthritis.

3A. All UA patients at two weeks

TE	SE	IgM RF +	IgM RF -	OR	95% CI	p
-	-	12	55	1.00	-	-
+	-	13	48	1.24	0.47-3.29	0.63
-	+	19	60	1.45	4.60-3.59	0.34 ¶
+	+	18	54	1.53	0.62-3.82	0.31 ¶
						0.75 π
TE	SE	anti-CCP +	anti-CCP -	OR	95% CI	p
-	-	6	54	1.00	-	-
+	-	9	48	1.69	0.49-6.19	0.35
-	+	20	47	3.83	1.33-12.53	0.01 ¶
+	+	21	47	4.02	1.40-13.09	0.01 ¶
						<0.01 π

3B. Subgroup of UA patients who develop RA within one year

TE	SE	IgM RF +	IgM RF -	OR	95% CI	p
-	-	6	12	1.00		
+	-	8	14	1.14	0.26-5.24	0.84
-	+	15	22	1.36	0.37-5.44	0.61 ¶
+	+	19	13	2.92	0.76-11.90	0.08 ¶
						0.87 π
TE	SE	anti-CCP +	anti-CCP -	OR	95% CI	p
-	-	8	10	1.00		
+	-	8	13	0.77	0.18-3.33	0.69
-	+	19	16	1.48	0.41-5.46	0.50 ¶
+	+	21	9	2.92	0.74-11.66	0.08 ¶
						0.12 π

3C. Subgroup of persistent UA patients at one year

TE	SE	IgM RF +	IgM RF -	OR	95% CI	p
-	-	6	37	1.00		
+	-	5	32	0.96	0.21-4.20	0.95
-	+	9	34	1.63	0.46-6.17	0.39 ¶
+	+	4	33	0.75	0.14-3.48	0.67 ¶
						0.62 π
TE	SE	anti-CCP +	anti-CCP -	OR	95% CI	p
-	-	1	36	1.00		
+	-	2	34	2.12	0.10-128	0.54
-	+	8	27	10.67	1.26-486	0.01 ¶
+	+	4	32	4.50	0.41-227	0.16 ¶
						0.03 π

¶ Comparison TE-SE+ versus TE+SE+ not significant

π P-value of Chi-square analysis of 2 by 4 table

DISCUSSION

A strong gene-environment interaction between TE and SE for the presence of autoantibodies was observed. Intriguingly, this gene-environmental interaction was only present in patients with RA and not observed in patients with (persistent) UA. Stratified analysis for the different autoantibody responses IgM RF and anti-CCP showed that the interaction is primarily for the anti-CCP response.

A recent Swedish study demonstrated that a gene-environment interaction between SE and smoking results in an elevated risk specifically for RF-positive RA (18). These data were replicated as well as extended in the present study. Replication by a separate group in a separate cohort minimizes the risk that the current findings are false positive (25). Both the Swedish and the current data demonstrate the lack of a relation between smoking and autoantibodies in SE-negative RA, indicating that this interaction is preferential for a given pathogenetic pathway in SE-positive RA. To specify this pathogenetic pathway with regard to the specificity of the autoantibody response, the stratified analysis for anti-CCP positivity yielded no additional effect of smoking on risk to develop RF. In contrast the stratified analysis for RF indicated that smoking more than doubled the risk in the SE-positive patients to develop anti-CCP antibodies. These data suggest that the gene environment interaction between smoking and SE leading to autoantibodies is primarily associated with the anti-CCP response. Apart from the specificity of this gene-environment interaction, our group has recently described that SE is only a risk factor for anti-CCP positive RA and not for anti-CCP negative RA (19). The current data do not allow the analysis of smoking as a risk factor for anti-CCP positive RA versus anti-CCP negative RA because no data of smoking in a matched group of the general population are known. However given the fact that SE alone is not a risk factor for anti-CCP negative RA (19), the gene-environment interaction between smoking and SE leading to anti-CCP antibodies seems characteristic for anti-CCP positive RA. Indeed no effect of smoking was observed in the SE-negative patients (see Table 2). These data are in line with our previously reported hypothesis that different pathogenetic pathways operate in anti-CCP negative RA as compared to anti-CCP positive RA. The demonstration of these pathogenetic pathways is difficult because it is not known which proteins are citrullinated as a result of smoking, nor is it known if or how smoking breaks normal tolerance to citrullinated self-proteins.

In this study the diagnosis persistent RA was defined as the presence of arthritis that did not fulfil any of the classification criteria after one year follow-up. This may lead to some misclassification because a small proportion of UA patients only develop RA after a longer time period. However, in previous analysis of this cohort this concerned only less than 15% of the patients with persistent UA at one year. More importantly, no interaction between smoking and shared epitope was observed at all in the persistent UA group.

A weakness of the current study is that the information on TE is limited to patient history taking and patients were not asked about the number of pack-years smoking. Therefore no conclusion on the minimal exposure can be drawn.

In summary, smoking was confirmed to be a risk factor for positive anti-CCP and positive RF antibodies in the presence of shared epitope in patients with RA. In UA

no interaction between TE and SE was demonstrated for the presence of autoantibodies.

LEGEND TO FIGURE

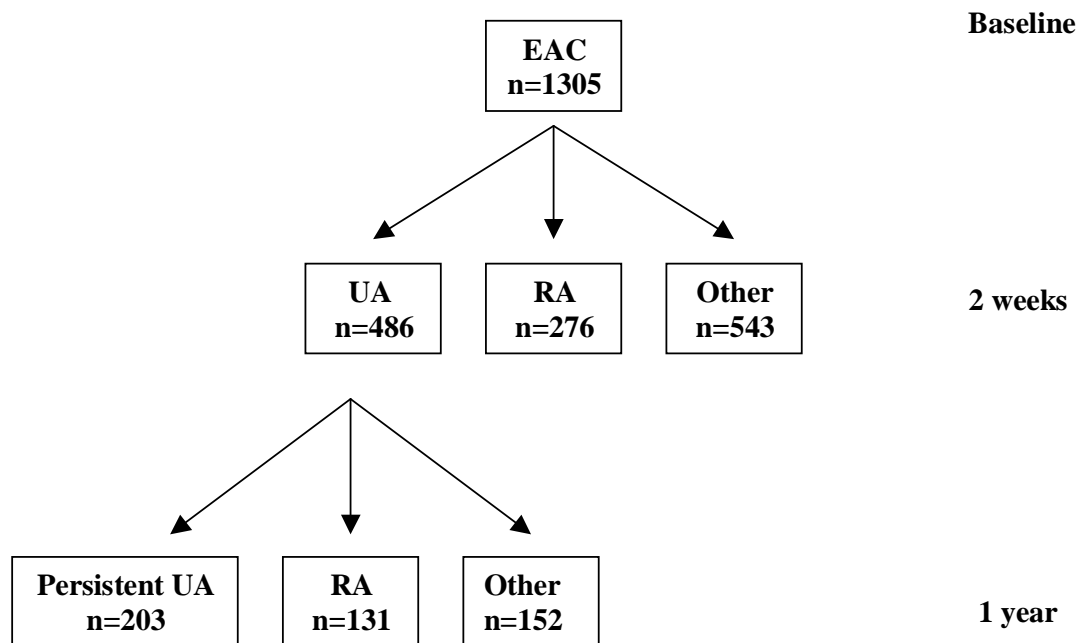
Figure 1. Flow chart Early Arthritis Clinic patients

REFERENCES

- 1 **Aho K**, Heliovaara M. Risk factors for rheumatoid arthritis. *Ann Med* 2004; **36**(4):242-251.
- 2 **Pattison DJ**, Symmons DP, Lunt M, Welch A, Luben R, Bingham SA et al. Dietary risk factors for the development of inflammatory polyarthritis: Evidence for a role of high level of red meat consumption. *Arthritis Rheum* 2004; **50**(12):3804-3812.
- 3 **Olsson AR**, Skogh T, Wingren G. Aetiological factors of importance for the development of rheumatoid arthritis. *Scand J Rheumatol* 2004; **33**(5):300-306.
- 4 **Krishnan E**, Sokka T, Hannonen P. Smoking-gender interaction and risk for rheumatoid arthritis. *Arthritis Res Ther* 2003; **5**(3):R158-R162.
- 5 **Chen J**. Age at diagnosis of smoking-related disease. *Health Rep* 2003; **14**(2):9-19.
- 6 **Wang PP**, Badley EM. Consistent low prevalence of arthritis in quebec: findings from a provincial variation study in Canada based on several canadian population health surveys. *J Rheumatol* 2003; **30**(1):126-131.
- 7 **Symmons DP**. Epidemiology of rheumatoid arthritis: determinants of onset, persistence and outcome. *Best Pract Res Clin Rheumatol* 2002; **16**(5):707-722.
- 8 **Buckner JH**, Nepom GT. Genetics of rheumatoid arthritis: is there a scientific explanation for the human leukocyte antigen association? *Curr Opin Rheumatol* 2002; **14**(3):254-259.
- 9 **Houssien DA**, Scott DL, Jonsson T. Smoking, rheumatoid factors, and rheumatoid arthritis. *Ann Rheum Dis* 1998; **57**(3):175-176.
- 10 **Korpilahde T**, Heliovaara M, Knekt P, Marniemi J, Aromaa A, Aho K. Smoking history and serum cotinine and thiocyanate concentrations as determinants of rheumatoid factor in non-rheumatoid subjects. *Rheumatology* 2004; **43**(11):1424-1428.
- 11 **Krishnan E**. Smoking, gender and rheumatoid arthritis-epidemiological clues to etiology. Results from the behavioral risk factor surveillance system. *Joint Bone Spine* 2003; **70**(6):496-502.
- 12 **Silman AJ**, Pearson JE. Epidemiology and genetics of rheumatoid arthritis. *Arthritis Res* 2002; **4** Suppl 3:S265-S272.
- 13 **Stolt P**, Bengtsson C, Nordmark B, Lindblad S, Lundberg I, Klareskog L et al. Quantification of the influence of cigarette smoking on rheumatoid arthritis: results from a population based case-control study, using incident cases. *Ann Rheum Dis* 2003; **62**(9):835-841.

- 14 **Goodson NJ**, Silman AJ, Pattison DJ, Lunt M, Bunn D, Luben R et al. Traditional cardiovascular risk factors measured prior to the onset of inflammatory polyarthritis. *Rheumatology* 2004; **43**(6):731-736.
- 15 **Mattey DL**, Dawes PT, Fisher J, Brownfield A, Thomson W, Hajeer AH et al. Nodular disease in rheumatoid arthritis: association with cigarette smoking and HLA-DRB1/TNF gene interaction. *J Rheumatol* 2002; **29**(11):2313-2318.
- 16 **Harrison BJ**, Silman AJ, Wiles NJ, Scott DG, Symmons DP. The association of cigarette smoking with disease outcome in patients with early inflammatory polyarthritis. *Arthritis Rheum* 2001; **44**(2):323-330.
- 17 **Harrison BJ**. Influence of cigarette smoking on disease outcome in rheumatoid arthritis. *Curr Opin Rheumatol* 2002; **14**(2):93-97.
- 18 **Padyukov L**, Silva C, Stolt P, Alfredsson L, Klareskog L. A gene-environment interaction between smoking and shared epitope genes in HLA-DR provides a high risk of seropositive rheumatoid arthritis. *Arthritis Rheum* 2004; **50**(10):3085-3092.
- 19 **Huizinga TWJ**, et al. Refining the complex rheumatoid arthritis phenotype based on specificity of the HLA-DRB1 shared epitope for antibodies to citrullinated proteins, *Arthritis Rheum* 2005; in press
- 20 **Van Gaalen FA**, Linn-Rasker SP, Van Venrooij WJ, de Jong BA, Breedveld FC, Verweij CL et al. Autoantibodies to cyclic citrullinated peptides predict progression to rheumatoid arthritis in patients with undifferentiated arthritis: a prospective cohort study. *Arthritis Rheum* 2004; **50**(3):709-715.
- 21 **Van Aken J**, van Bilsen JH, Allaart CF, Huizinga TW, Breedveld FC. The Leiden Early Arthritis Clinic. *Clin Exp Rheumatol* 2003; **21**(5 Suppl 31):S100-S105.
- 22 **Arnett FC**, Edworthy SM, Bloch DA, McShane DJ, Fries JF, Cooper NS et al. The American Rheumatism Association 1987 revised criteria for the classification of rheumatoid arthritis. *Arthritis Rheum* 1988; **31**(3):315-324.
- 23 **Bas S**, Genevay S, Meyer O, Gabay C. Anti-cyclic citrullinated peptide antibodies, IgM and IgA rheumatoid factors in the diagnosis and prognosis of rheumatoid arthritis. *Rheumatology* 2003; **42**(5):677-680.
- 24 **Lard LR**, Boers M, Verhoeven A, Vos K, Visser H, Hazes JM et al. Early and aggressive treatment of rheumatoid arthritis patients affects the association of HLA class II antigens with progression of joint damage. *Arthritis Rheum* 2002; **46**(4):899-905.
- 25 **Huizinga TW**, Pisetsky DS, Kimberly RP. Associations, populations, and the truth: recommendations for genetic association studies in Arthritis & Rheumatism. *Arthritis Rheum*. 2004 Jul;**50**(7):2066-71 .

Figure 1. Flow chart Early Arthritis Clinic patients



UA=Undifferentiated Arthritis
RA= Rheumatoid Arthritis